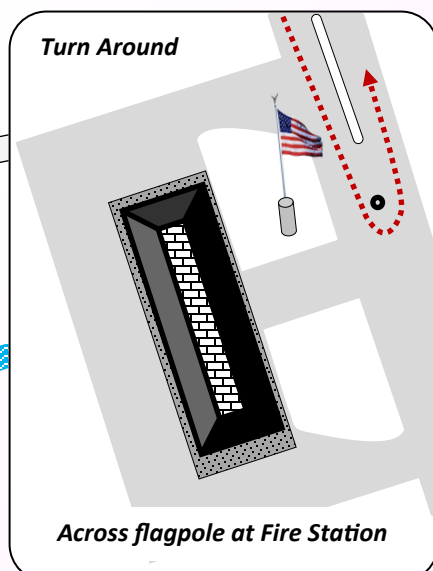
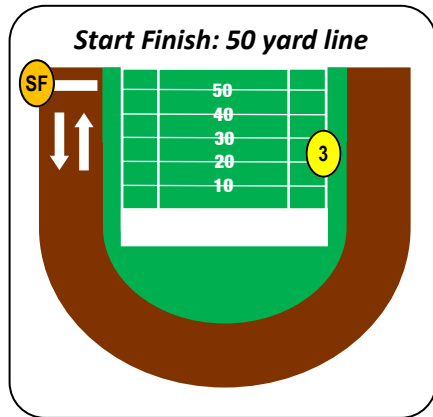
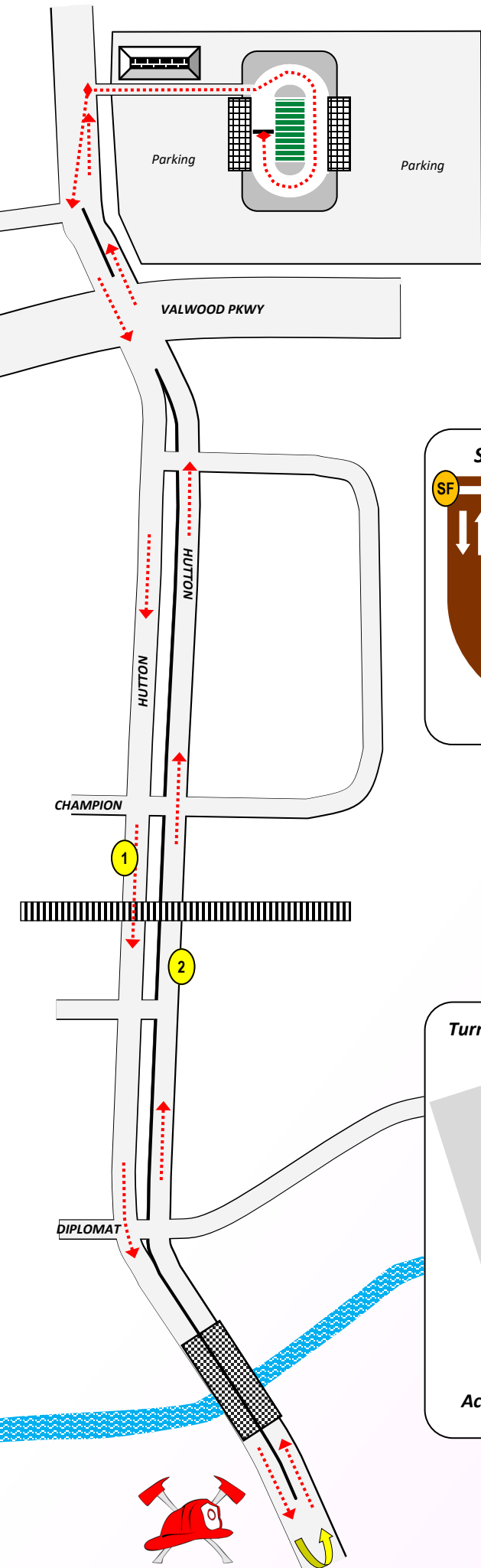


Kacie Run | Carrollton, TX

USATF Certification TX17004MWC

Effective March 7th 2017 to Dec. 31st 2027

Measured by Matthew Compton



**\*\* Outside (curbside) lanes only when on Hutton \*\***

**Description:** Start on the track even with the 50 yard line on the West side and facing South. Run a counter-clockwise loop around the track until reaching the exit gate on the Northwest side. Exit the stadium pad and follow the adjacent drive to Hutton. Cross directly over to the West-most curbside lane and head South on Hutton. Remain until reaching the turn-around crossover point at the Fire Station. Cross over to the Northbound curbside lane of Northbound Hutton. Follow Hutton back to the same drive taken to exit the stadium. Re-enter the stadium and run a clockwise loop back the 50 yard line on the West side to finish.

**Start:** West side 50 yard line facing South.

GPS: 32.9404 -96.9144

**M1:** 9 ft. South of hydrant @ door 102 bldg. 2210

GPS: 32.9315 -96.9153

**Turn:** Across from flag pole at fire station

GPS: 32.9239 -96.9131

**M2:** 12 ft. before railroad crossing sign

GPS: 32.9300 -96.9149

**M3:** At South 26 yard line on the East side.

GPS: 32.9403 -96.9137

