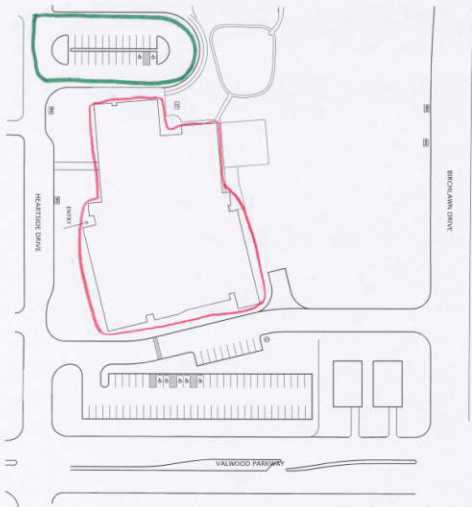


DAVID BLAIR ELEMENTARY

OUTDOOR WALKING TRAILS



- Walking the outer edges of the parking lot between Blair and Montgomery (fire lanes) is 476'. 11 laps is about a mile.
- Walk around building on sidewalks and some grass is 1133'. 4.67 laps is a mile.

1998 BOND PROGRAM INFORMATION	
Project Scope:	New Construction
Estimated Cost:	\$ 5,851,200
Actual Cost:	\$ 5,10,891,296
FACILITY INFORMATION	
Building Capacity:	545
2002 Enrollment:	348
Portable Classrooms:	n/a
Grades Served:	3-5
Total Building Area (S.F.):	77,681

© 2002 by Blair Elementary, Inc. All rights reserved. This document is the property of Blair Elementary, Inc. and is not to be distributed or used in any other way without the written permission of Blair Elementary, Inc.



DAVE BLAIR INTERMEDIATE SCHOOL
SITE PLAN

18055 Heartside Dr.
Vancouver, BC, TX 75288

SJB