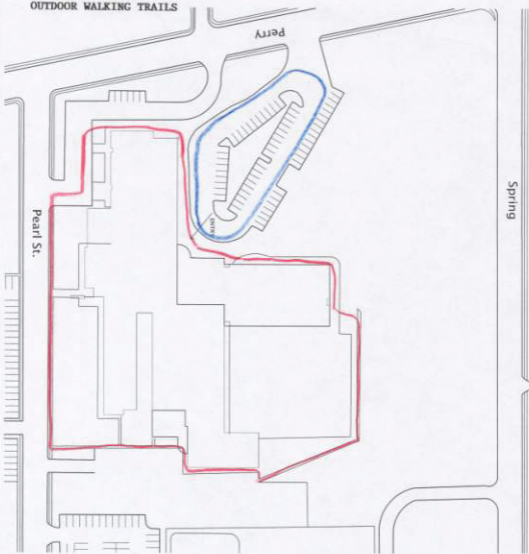


**CARROLLTON ELEMENTARY
OUTDOOR WALKING TRAILS**



- Walking around school (some grass) is .24 mile
A little over 4 laps is a mile
- Walking the outer edge of the front parking lot is 606'. 8 laps is a mile.

1998 BOARD PROGRAM REFORMATION	
Project Scope:	Major Renovation
Estimated Cost:	\$4,809,980
Actual Cost:	\$4,798,535
FACILITY INFORMATION	
Building Capacity:	636
2002 Enrollment:	635
Portable Classrooms:	1-5
Garden Beds:	1-5
Total Building Area (S.F.):	83,180

© District School Trustees, 1998. 2002 Enrollment Information
 * District School Trustees, 1998. 1998 - Building Renovation
 * District School Trustees, 1998. 1998 - Building Renovation



SAHA