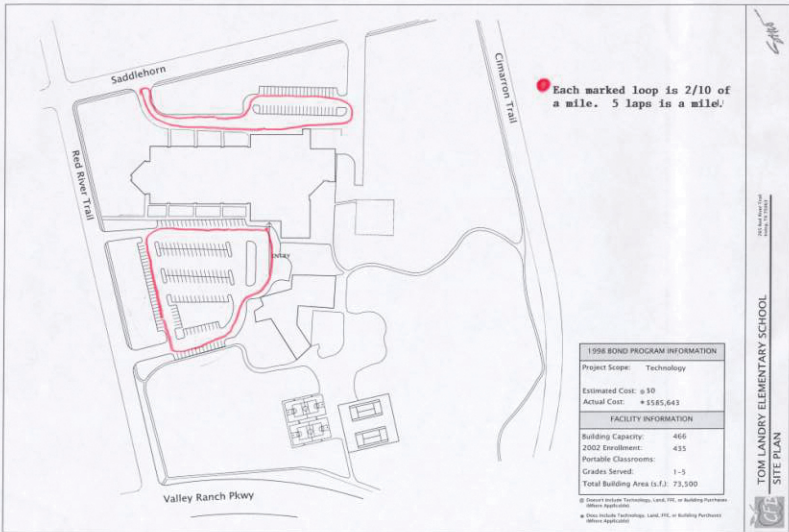


**TOM LANDRY ELEMENTARY  
OUTDOOR WALKING TRAILS**



● Each marked loop is 2/10 of a mile. 5 laps is a mile!

1998 BOND PROGRAM INFORMATION	
Project Scope:	Technology
Estimated Cost:	± \$0
Actual Cost:	± \$585,643
FACILITY INFORMATION	
Building Capacity:	466
2002 Enrollment:	435
Portable Classrooms:	
Grades Served:	1-5
Total Building Area (s.f.):	73,500

© Counts include Technology, Land, P.E., or Building Partners (Where Applicable)  
 \* Does include Technology, Land, P.E., or Building Partners (Where Applicable)

*Handwritten signature*

1998 Bond Program  
 Drawing: 10/10/00

**TOM LANDRY ELEMENTARY SCHOOL  
 SITE PLAN**

